



BCMI

شركة البداهة للصناعات الحديثة المحدودة
Al-Badaha Company For Modern Industries

Al-Badaha Company for Modern Industries (BCMI)

Company Profile





Table of Contents

Introduction Our Vision - Our Mission - Our Quality BCMI in Brief Why BCMI?	02	Chemical Products Resin Resin Products Recommended Storage Instructions Pigment Granit Pigment	33
Our Products			
Industrial Marble Gold Stone Gold Stone Features Uses & Applications Technical Specifications Physical Specifications Awards &certificates Color List Basin Sizes	07	Electrical Products Electrical Panels Manufacturing Electrical Installations Electrical Maintenance Services	39



Our Vision

To create a group of integrated industrial companies that is economically successful, scientifically, administratively, and industrially sophisticated. As well as morally advanced in order to serve our society and contribute to our nation.



Our Mission

We aspire to be the leading artificial marble manufacturer company within the KSA and to compete with international companies in order to export our products worldwide, We hold ourselves accountable to produce products that are in compliance with the best local and international practices in order to meet our client's expectations and set a new international record in term of Quality. We at (BCMI) look forward to be an attractive environment for the young national talents, specialists, and qualified to thrive.

Our Quality





About BCMI

Al-Badaha Company for Modern Industries Ltd. (BCMI) is a Saudi-Canadian investment company incorporated in 1421A.H. – 2000A.D. The Company started as a factory for manufacturing solid surfaces only, yet it developed to own several brands in several industries, one of the most important of these brands is "Gold Stone" which is one of the most famous brands in the Kingdom of Saudi Arabia in the field of artificial marble.

The company started with 8 staffs only and grew to exceed 500 male and female employees.

The operation started with one manufacturing and installation technician and one truck, nowadays the company owns a fleet composed of over 30 manufacturing and installation teams of top-notch skills.

The company started with a single location--, yet it expanded to operate from more than 10 locations inside the Kingdom of Saudi Arabia and abroad that include factories, warehouses, and showrooms of a total area of more than 120,000 m².

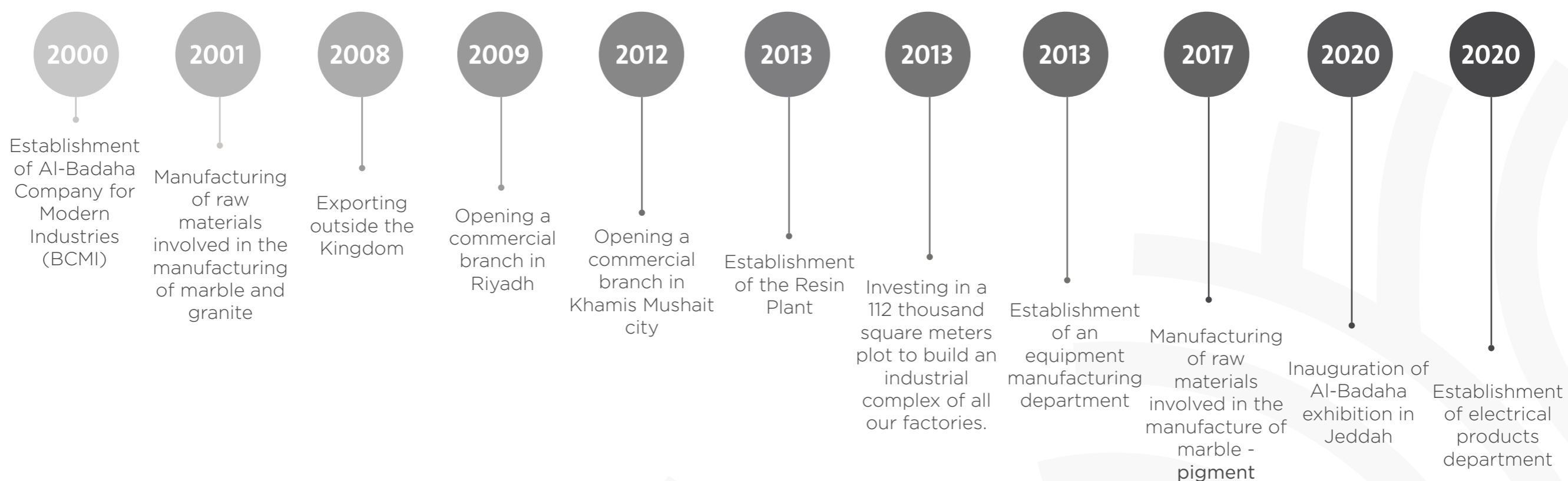
Al-Badaha Company started by manufacturing solid surfaces (artificial marble), then it developed to manufacturing raw materials for solid surfaces, the most predominant of which are: unsaturated resins and industrial colorants (pigment).

As we in (BCMI) highly believe in the Saudization Project and the importance of supporting our national talents, therefor Al-Badaha Company participated in training many Saudi talents who have been trained and distributed in the company's various departments, recently the number of our national staffs reached to more than seventy Saudi employees.

The corporate head office is located in Jeddah city and consists of the General Administration and the main factory for the production of solid surfaces and quality laboratories. In order to serve our customers in an integrated manner by fulfilling their requests and design, manufacture, and deliver according to their wishes, several branches have been opened in various parts of the Kingdom, the most predominant of which are Riyadh Branch and Khamis Mushait city Branch. In addition to our agents in various regions of the Kingdom, we also have sales outlets in the following countries: UAE, Bahrain, Yemen, Oman, Jordan & Turkey.



BCMI History & Timeline:





Why BCMI?

Because we are the leading company in its field in the Kingdom of Saudi Arabia and the Middle East region, we are also competing with the largest international companies in terms of quality and industry standards, as we rely on a fleet of national staff who are well-versed and experienced in the industry.

We are distinguished by providing excellent services to our customers starting from providing the largest possible number of options with the highest quality standards and won't complete without ensuring customer satisfaction with our service which is provided by an integrated team of technicians, officials and customer service employees who all work to earn your satisfaction.

Our Products

Al-Badaha Company provides its customers with a variety of options from the best products that are characterized by quality and durability, like:

- 1- Industrial Marble
- 2- Chemical Products (unsaturated resin - industrial colorants (pigment))
- 3- Electrical Products





First Product

Industrial Marble

It is an alternative product to natural marble, and it is characterized by its durability and strength, the thing which ensures its resistance to breakage. It is also known as a practical product, available in a wide range of colors that satisfy all tastes, in addition to that it has been the product of choice by many health authorities as it is considered an environmentally friendly product.



Gold Stone®

It is the most famous industrial marble product in the Kingdom and it is the most outstanding brand of Al-Badaha Company, commensurate with the global requirements of the solid surfaces used in many fields in order to achieve high resistance against most of the physical effects and commonly used chemical agents.

Gold Stone® is a solid surface with many physical, chemical, and mechanical properties that make it the first choice in many ways inside homes and in public buildings such as hospitals, banks, offices, restaurants, and shopping centers.





Gold Stone[®] Features

1- Gold Stone[®] surfaces are Hygienic to be used at dining and food preparation areas such as kitchens, restaurants, hotels, etc. as its surface is nonporous thus preventing the growth of mildew and bacteria, it is also non-absorbent and easy to clean, and the welds used in it are of the same component material making it without seams or joints that allows accumulation of dirt and making the surface a cohesive unit, Such features makes it the most suitable for use in hospitals and medical centers (reception counters, nursing stations, service, and washing basins).

2- Gold Stone[®] surfaces are resistant to stains and most chemicals used in common life. It is compliant in this regard with KSA standards and can be used in school labs, clinics ... etc.

3- Gold Stone[®] surfaces are amenable to maintenance, restoration and remodeling either as a result of misuse or consequent of moving the product from one place to another.

4- Gold Stone[®] surfaces are fire resistance (non-flammable), as it contains flame-damping aluminum hydroxide.

5- Goldstone[®] surfaces have exceptional physical properties in terms of strength, durability, and modeling flexibility. It is also lighter in weight when compared to natural marble materials. As its average specific weight is about 1.75 g/cm³, and may be efficiently used at a thickness of 12 mm in horizontal applications and 6 mm thick for vertical applications, the thing which makes it even more efficient (various thicknesses are available upon customer's request).

6- Finally, one of the best features of Gold Stone surfaces is its diverse range of options offered to the customer, which makes it suitable to be used in various interior design applications such as kitchens, bathrooms, or incorporated with other pieces of furniture or even with lighting, swimming pools, etc.





Uses & Applications

The company offers its solid surface products and services in the form of:

Kitchens: made of aluminum or wood, with surfaces made of artificial marble.



Counters: made of artificial marble with cabins of aluminum or wood.



Basins' Decoration: traditional and modern designs.



Wall cladding & columns.





Al-Badahah Provides After-Sales Services to Customers Which Include:



10-year guarantee against any manufacturing defects



Maintenance as needed in cases of malfunction caused by misuse.

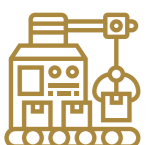


Surface polishing



Reconstitution in the event of relocating

For Al-Badaha Panels Clients, The Company Provides The Following Services:



Training on operating and manufacturing technology of finished products



Insuring operation equipment



The company provides its solid surface products with thicknesses of 25 mm, 18 mm, 12 mm and 6 mm



Engraving and printing images or logos on artificial marble surfaces.

Guarantee Card



BCMI
شركة الباداهة للصناعات الحديثة
Al-Badahah Company For Modern Industries



GOLD STONE

- 10 years guarantee for sold surfaces installed in home, offices and shops
- 3 years guarantee for sold surfaces installed in hotels and restaurants
- One year guarantee for sold surfaces installed in schools and hospitals

The guarantee covers product defects, manufacturing and installation defects and errors.



Al-Badahah Provides After-Sales Services to Customers Which Include:

Gold Stone® surfaces are manufactured from isophthalic and orthophthalic polyester resin as modified by acrylic in balanced proportions, in addition to pigments and further necessary enhancing additives. The manufacturing raw materials are compliant with the Saudi standards requirements.

Basic limitations:

Gold Stone® solid surfaces are designed for both indoor and outdoor uses, taking into consideration that they are used for outdoor applications, the design and installation procedures must take into account some points in terms of extreme exposure to temperature, fluctuations, expansion and contraction factors, and exposure to Ultra violet rays, just like are like any other material. Ignoring this may lead to a slight change in colors, especially dark colors, in addition to the possibility of bending in some sides of the surfaces.



Manufacturing & Installation:

Manufacturing: The company employs a collection of experienced and qualified engineers and chemists as well as a team of skilled and trained workers to manufacture the products, in order to fulfill any special requirements by our customers in a professional and timely manner.

Installation: the company has a fleet of experienced installation teams to cover the areas in the Kingdom of Saudi Arabia.

In order to maintain a high profile service to the customer, we are keen to promote the skills of our manufacture and installation manpower by continued training and introduction of the most advanced international technologies To our work.

Final Shape & Limitations:

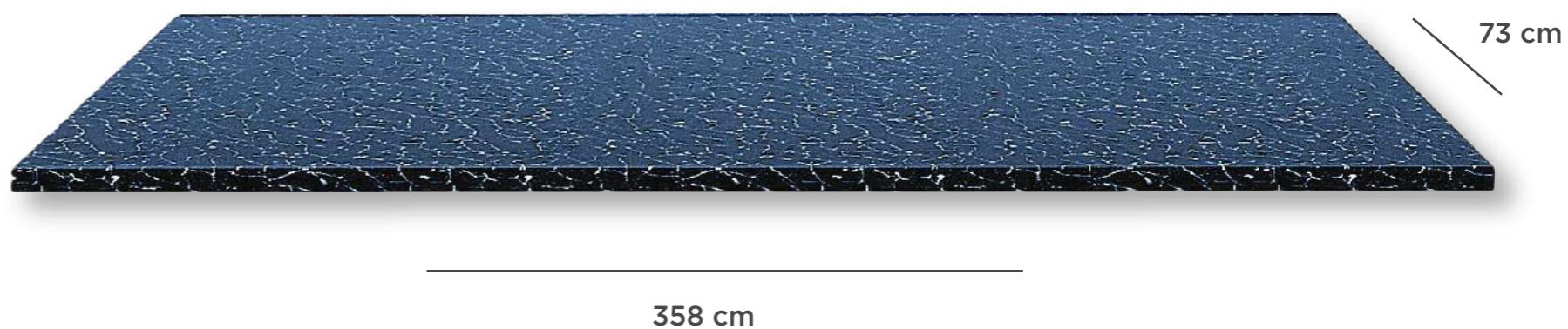
The solid surfaces are usually of slight glossiness, the final shape should be finalized by the installation technician in several options, starting from matt to extreme glossy depending on the customer's requirement.

Glossy, semi- glossy, deep and dark colors all require care and maintenance more than other surfaces.



Standard Slabs Dimensions:

Length	Width (optional)	Thickness (optional)
358 cm	73/76 cm	2.5 cm
358 cm	73/76 cm	1.8 cm
358 cm	73/76 cm	1.2 cm
358 cm	73/76 cm	0.6 cm





Technical & Physical Specifications of Gold Stone Products

TEST	WORLD STANDARDS	HIGH QUALITY PRODUCT	CLASS ONE PRODUCT
Flexural Strength (MPa)	≥27.58MPa	≥27.58MPa	≥27.58MPa
Flexural Modulus (MPa)	≥6895MPa	≥6895MPa	≥6895MPa
Barcol Harness	50-70 Barcol	50-70 Barcol	50-70 Barcol
Flatness of Sheets	≤1.6mm	≤1.6mm	≤1.6mm
Ball Impact Resistance 226.8 gr± 3 gr	Pass at 1525 mm(60 in.) Thickness = 0.472441 in	Pass at 1525 mm(60 in.) Thickness = 0.472441 in	Pass at 1300 mm Thickness = 0.472441 in
Boiling Water Resistance	No effect	No effect	No effect at 90°C
High Temperature Resistance	No effect	No effect at 180°C	No effect at 110°C
Thickness (T)	T±(0.1+0.05 T)	T±(0.1+0.05 T)	12-12.3mm±(0.2mm) in not more than 2 areasfrom the whole sheet
Visual Defects in Dark Color	5≥ 0.1 sq.mm.(same size of granite 5)per sheet	5≥ 0.1 sq.mm.(same size of granite 5)per sheet	≤4 from the same size of granite but not more than size 8
Visual Defects in Light Color	5≥ 0.1 sq.mm.(same size of granite 5)per sheet	5≥ 0.1 sq.mm.(same size of granite 5)per sheet	≤2 from the same size of granite but not more than size 8
Visual Defects in Solid Color	5≥ 0.1 sq.mm.(same size of granite 5)per sheet	5≥ 0.1 sq.mm.(same size of granite 5)per sheet	5≥ 0.1 sq.mm (same size of granite 5)per sheet
Air Bubbles	1≥ 0.05mm per sheet or 5≥ 0.025mm per sheet	1≥ 0.05mm per sheet or 5≥ 0.025mm per sheet	12≥ 0.05mm or 6≥ 0.5mm per sheet



Gold Stone[®] Marble Panels

PROPERTIES	SPECIFICATION RANGE	TEST FREQUENCY	METHOD NO.
Sheet dimensions	358 cm (L) x 73 cm (W)	Daily	-
Thickness	14.8-14 mm {2.4 ±} not repeated more than twice throughout the plate	Daily	-
Flexural Resistance (MPa)	27.58 ≥ MPa	Sample every month	ASTM07
Flexion Modulus (MPa)	6895 ≤ MPa	Sample every month	-
Hardness (Barcool)	50-70 barcool	Sample every month	ASTM08
Flatness (Sheet Flatness)	1.6 ≤ mm	Daily	ASTM09
Color Stability	Pass (no discoloration or partial change in welding length)	-	ASTM10
Cleansability and stain Resistance Factor	52 ≥	-	ASTM11



Gold Stone Marble Panels

PROPERTIES	SPECIFICATION RANGE	TEST FREQUENCY	METHOD NO.
Bubbles - Visible Defects	1-14 bubbles of 2.27 mm max. per sheet 1-6 bubbles of 2.7mm max. per sheet	Daily	ASTM 12
Visible defects - Blemishes - Dark Colors	Maximum blemishes for a sheet of same size as granite, no higher than size 8		
Visible defects - Blemishes - Light Colors	Maximum blemishes for slab of same size as granite and no higher than size 8		
Visible defects - Blemishes - Solid Colors	5% Blemishes with a diameter of 0.1 mm. Maximum for a sheet of the same size as granite 5		
Rust Resistance	Pass : at 1,300 mm {60 in] thickness 0472441 in	Sample every month	ASTM 13
Boiling Water Resistance	Not effected until 90 AD	Sample every month	ASTM 14
High Temperature Resistance	Not effected until 110 AD	Sample every month	ASTM 15



Major Projects Educational Facilities

PROJECT	LOCATION
Princess Nourah Bint Abdul Rahman University	Riyadh
Effat University	Jeddah
Teaching Staff Housing - King Faisal University	Al-Ahsa
Student Housing - Taif University	Al Taif
Faculty Staff & Students Housing - Al-Kharj University	Al-Kharj
King Abdulaziz University	Jeddah
King Khalid University	Abha
Najran University	Najran
Hail University	Hail
Taibah Islamic University	Al Madinah Al Munawarah
Al Faraa University	Abha
Technical Colleges - Technical Training Institutes	Many cities within SA Kingdom
Kingdom Generation Leadership Schools	Riyadh
Manarat National Schools	Jeddah



Major Projects Health Facilities & Medical Centers

PROJECT	LOCATION	PROJECT	LOCATION
Dr. Samir Abbas Hospital	Jeddah	International Medical Center	Jeddah
King Abdullah Medical Complex	Jeddah	King Abdulaziz Medical City	Jeddah
Dr. Bakhsh Hospital	Jeddah	King Fahd General Hospital	Jeddah
Dr Hala Essa Binladen Hospital	Jeddah	University Dental Hospital	Al Taif
Armed Forces Hospital	Al Taif	Mental Health Hospital	Al Taif
Dr. Ahmed Abanamy Polyclinic	Riyadh	National Guard Nephrology Center	Riyadh
Dental clinics	Sharma - Neom	Dental Clinics	Tabuk
Nephrology & Dialysis Center	Arar	Duba General Hospital	Duba
Taymaa General Hospital	Taymaa	Amlag General Hospital	Amlag
Yanbu General Hospital	Yanbu	Al Ansari Hospital	Yanbu
King Abdulaziz Hospital	Mecca	Hera General Hospital	Mecca
Al Noor Specialized Hospital	Mecca	Ibn Sina General Hospital	Mecca
Maternity & Children Hospital	Khamis Mushait	Al Borg Medical Laboratories	Mecca
Ayoun Al Jawa Hospital	Al Qassim	Armed Forces Hospital	Jeddah



Major Projects Government Agencies Facilities

PROJECT	LOCATION
National Guard H.Q.	Jeddah
Al Jawhara Sports Stadium	Jeddah
Social Security Administration building	Al Bahah
King Faisal Naval Base	Jeddah
King Abdullah Air Base	Jeddah
General Civil Aviation Authority	Jeddah
Ministry of Commerce & Industry	Dammam
Red Crescent Headquarters	Al Mashaaer Al Mugaddassah
Orphans Residence	Jeddah
Sharia Courts Complex	Dammam



Major Projects Government Agencies Facilities

PROJECT	LOCATION
National Guard Command & Staff College	Riyadh
General Directorate of Prisons	Jeddah - Breiman
Airport Security	Al Madinah Al Munawarah
Administrative Buildings for Military Industries	Al-Kharj
King Khaled International Airport	Riyadh
Prince Nayef Bin Abdulaziz International Airport	Al Qassim
King Abdulaziz International Airport	Jeddah
Administrative Buildings for Military Industries	Jeddah
Masjid Al-Haram Wudu Stations	Mecca



Gold Stone® Awards & Certificates

Gold Stone® products are registered with "ISFA" International Organization for Industrial Marble.

- Al Badaha products holds the international ISO certification 2001: 2008 in addition to the Green certificate.

- The Winner of the European Golden Arch Award for quality – Germany.

- Our product has obtained several approvals in government and private sector projects such as:

- Ministry of Higher Education
- National Guard
- Ministry of Health
- Ministry of Defense
- Ministry of Interior
- Royal Aviation Authority
- Saudi Oger
- Saudi Aramco
- Ministry of Commerce
- General Organization for Social Insurance (GOSI)
- Technical & Vocational Training Corporation
- Ministry of Education



Registration Schedule

SCOPE OF REGISTRATION

Production of Molded Pieces of Marble, Industrial Marble Slabs, Granite Powder & Sinks.

Company Name: **Al-Badaha Company for Modern Industries Ltd.**

Sites Registered: A Bullrahman Al- Khozaie Road, Al Marwa District, Jeddah, Makkah - Almadinah Highway, Asfan Bridge Exit, Kingdom of Saudi Arabia
Makkah - Almadinah Highway Asfan Bridge Exit, Kingdom of Saudi Arabia

Standard: **ISO 9001:2015**

EAC: 15

Certificate Number: AJA12/16301

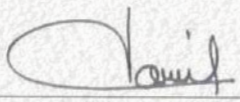
Date of Re-Registration: 2nd September 2018

Expiry Date: 2nd September 2021

Next Re-Audit Due Date: 2nd July 2021

Revision Date: 4th April 2019




Certification General Manager - AJA Registrars Ltd



This certificate is the property of AJA Registrars Ltd and must be returned on request. This certificate has been issued by AJA Registrars Ltd Unit 6 Gordano Court Gordano Gate Business Park, Serbert Close, Portishead Bristol UK, BS20 7FS

Registration Certificate

This is to certify that the Management Systems of

Al-Badaha Company for Modern Industries Ltd.

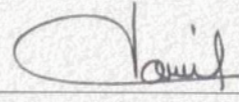
have been assessed by AJA Registrars and registered against the requirements of

ISO 9001:2015

Certificate No. : **AJA12/16301** Date of Original Registration : **17th September 2012**

Expiry Date : **2nd September 2021** Date of Re-Registration : **2nd September 2018**




Certification General Manager - AJA Registrars Ltd



This certificate is issued in respect of the locations & scope of registration detailed in the Associated Registration Schedule. This certificate is the property of AJA Registrars Ltd Unit 6 Gordano Court Gordano Gate Business Park, Serbert Close, Portishead Bristol UK, BS20 7FS and must be returned on request. A member of the AJA Group of Companies.



CERTIFICATE OF COMPLIANCE

 **Al-Badaha Factory Company for Marbles**
GoldStone® Solid Surface

85811-410
Certificate Number

01/20/2017 - 07/13/2021
Certificate Period

Certified
Status

UL 2818 - 2013 Standard for Chemical Emissions for Building Materials, Finishes and Furnishings

Building materials are determined compliant in accordance with an Office environment with an air change of 0.68 hr⁻¹ and a loading of 3.20 m².
Products tested in accordance with UL 2818 test method to show compliance to emission limits in UL 2818, Section 7.1.



UL investigated representative samples of the identified Product(s) to the identified Standard(s) or other requirements in accordance with the agreement and any applicable program service terms in place between UL and the Certificate Holder collectively "Agreement". The Certificate Holder is authorized to use the UL Mark for the identified Product(s) manufactured at the production sites covered by the UL Test Report, in accordance with the terms of the Agreement. This Certificate is valid for the identified dates unless there is non-compliance with the Agreement.

CERTIFICATE OF COMPLIANCE

 **Al-Badaha Factory Company for Marbles**
Solid surface / Sheet 8089

81623-410
Certificate Number

07/13/2016 - 07/13/2021
Certificate Period

Certified
Status

UL 2818 - 2013 Standard for Chemical Emissions for Building Materials, Finishes and Furnishings

Building materials are determined compliant in accordance with an Office environment with an air change of 0.68 hr⁻¹ and a loading of 3.20 m².
Products tested in accordance with UL 2818 test method to show compliance to emission limits in UL 2818, Section 7.1.



UL investigated representative samples of the identified Product(s) to the identified Standard(s) or other requirements in accordance with the agreement and any applicable program service terms in place between UL and the Certificate Holder collectively "Agreement". The Certificate Holder is authorized to use the UL Mark for the identified Product(s) manufactured at the production sites covered by the UL Test Report, in accordance with the terms of the Agreement. This Certificate is valid for the identified dates unless there is non-compliance with the Agreement.

 **Certificate of Membership**

This is to Certify That

Al-Badaha Company for Modern Industries

Is a member in good standing with the
International Surface Fabricators Association for the year

February 2021 - 2022

And a valued member of ISFA since

2021

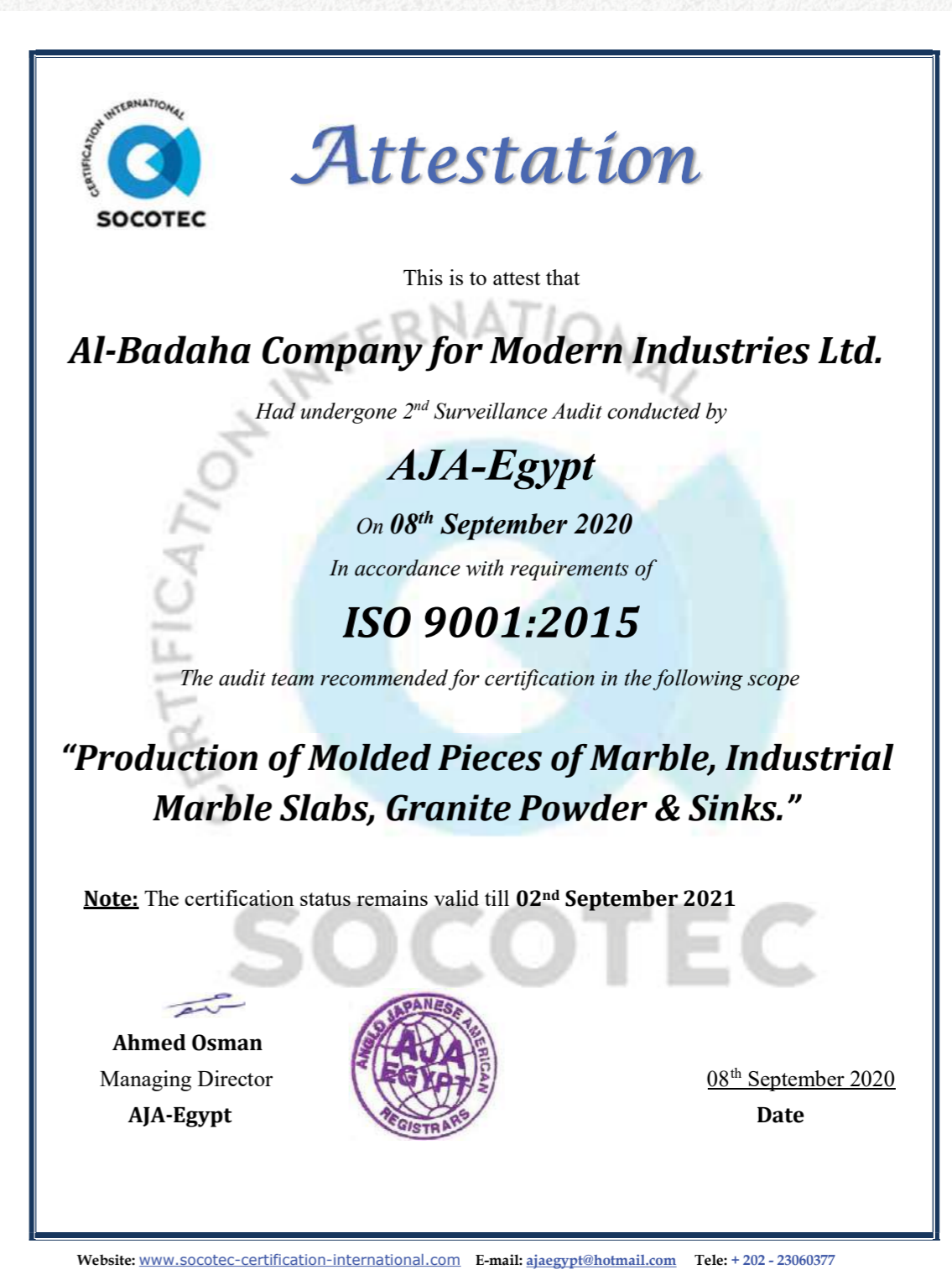
Steven Mast,
ISFA Board President

Nancy Busch,
ISFA Executive Director



CERTIFICATE

for Modern Industries Ltd.



Attestation

This is to attest that

Al-Badaha Company for Modern Industries Ltd.

Had undergone 2nd Surveillance Audit conducted by

AJA-Egypt

On 08th September 2020


In accordance with requirements of

ISO 9001:2015

The audit team recommended for certification in the following scope

“Production of Molded Pieces of Marble, Industrial Marble Slabs, Granite Powder & Sinks.”

Note: The certification status remains valid till 02nd September 2021


Ahmed Osman
Managing Director
AJA-Egypt



08th September 2020
Date

Website: www.socotec-certification-international.com E-mail: ajaegypt@hotmail.com Tele: + 202 - 23060377



Our Partners of Success

وزارة الصحة
Ministry of Health



المركز الطبي الدولي
International Medical Center



مستشفى الدكتور سمير عباس
Dr. Samir Abbas Hospital



GACA®
الهيئة العامة للطيران المدني
General Authority of Civil Aviation



كينان
kinan



Pando
شركة بنده للتجزئة
Panda Retail Company

فقيه
مجموعة فقيه السياحية
Fakieh Hospitality & Leisure Group

Holiday Inn



وزارة التعليم العالي
MINISTRY OF HIGHER EDUCATION



وزارة التعليم
Ministry of Education

المؤسسة العامة للتدريب التقني والمهني
Technical and Vocational Training Corporation



د. سليمان الحبيب
DR SULAIMAN AL HABIB
المجموعة الطبية



المراكز العربية
Arabian Centres

مصرف الراجحي
Al Rajhi Bank



أرامكو السعودية
saudi aramco





Color Swatches

CLASSIC COLLECTION



Actual products colors may slightly vary from the photos in the catalogue





Color Swatches

CLASSIC COLLECTION



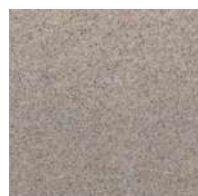
Actual products colors may slightly vary from the photos in the catalogue



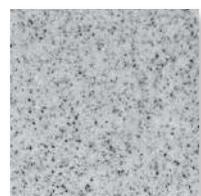


Color Swatches

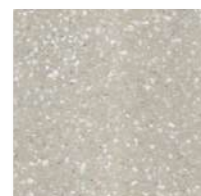
CLASSIC COLLECTION



9060
Pure SandyBeige



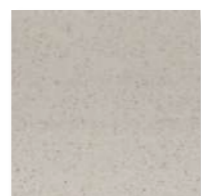
9058 - Twilight



9066 - Granola



9064 - Fossil



9063 - Polar Lights

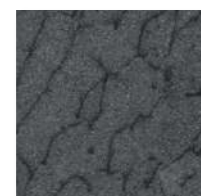


9069 - Dark Sandy
Beige

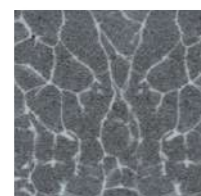
CRACKED COLLECTION



K74 - Silver



K74 - Charcoal



K73 - Nickel



K71 - White



K70 - Pearl



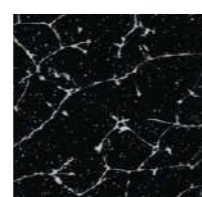
K78 - Land



K77 - Mudcrack

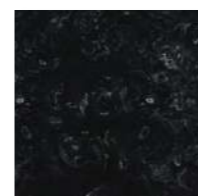


K76 - Gray

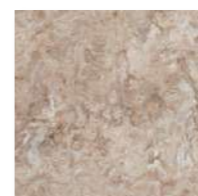


K75 - Black

MODERN TOUCH



QH19 - Royal Black



QH17 - Hazelnut



QH16 - Sandy Beige



QH15 - Platinum



QH14 - Fog



QH13 - Pearl



QH27 - Caramel



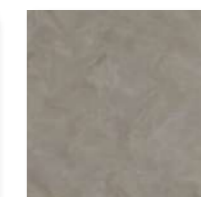
QH26 - Ozark
Shadows



QH25 - Bronze



QH24 - Light Pearl



QH23 - Macadamia



QH22 - Becan

MODERN ELITE



V06 - Gray Mist



V05 - Sandstorm



V04 - Beige Mist



V03 - Royal White



V02 - Alabaster



V01 - Mist

Actual products colors may slightly vary from the photos in the catalogue



Warranty Policy

- 10-year warranty for solid surfaces installed at home, offices and shops.
- 3-years" Warranty for solid surfaces installed at hotels and restaurants.
- One year warranty for solid surfaces installed at schools, hospitals and projects.





Basins Models & Sizes



Model: FL044
Length: 38.5
Width: 38.5
Depth: 11.5
Weight (kg): 5



Model: TL
Length: 53
Width: 40
Depth: 13
Weight (kg): 8



Model: ST80
Length: 71.5
Width: 40
Depth: 18
Weight (kg): 18



Model: ST70
Length: 62
Width: 40
Depth: 18
Weight (kg): 15.5



Model: KB2
Length: 80.5
Width: 42
Depth: 16.5
Weight (kg): 21



Model: ST3
Length: 51
Width: 41
Depth: 15.5
Weight (kg): 12.5



Basins Models & Sizes



Model: ST2
Length: 71
Width: 41
Depth: 20.5
Weight (kg): 18



Model: 1375
Length: 41
Width: 27.5
Depth: 13
Weight (kg): 6.6



Model: ST
Length: 36
Width: 34
Depth: 14.5
Weight (kg): 7.5



Model: 1350
Length: 50.5
Width: 33.5
Depth: 16
Weight (kg): 8



Model: 2000
Length: 49.5
Width: 35
Depth: 15.5
Weight (kg): 6.5



Model: FB
Length: 84
Width: 39
Depth: 20.5
Weight (kg): 19





Second Product

Chemical Products

One of our specialties at Al-Badaha Company for Modern Industries (BCMI) is chemical industrialization, as we have a dedicated team that is experienced in research and development, in addition to the production and quality teams that work to manufacture products of the highest standards, such as: unsaturated polyunsaturated (Resins) - Industrial colorants (pigment)





Resins

Unsaturated polyester resins are produced by subjecting a group of acidic and glycolate substances to heat where they react creating a basic polyester chain. The final mixture is obtained by dissolving this product with an unsaturated solvent like Styrene.

At (BCMI) we import the finest raw materials from well-known global manufacturers. That, in addition to our strong knowledge of the industry due to years of research and experience with the assistance of our top-notch engineers, and as we focus mainly on developing products that meet our clients' expectations of the highest standards; We became qualified to produce a variety of distinctive products of unsaturated resins, the most important of which are:

Resin Products

- Resin used for the production of artificial marble for various uses. it belongs to (M) category, an abbreviation for the word (Marble). we offer four products: M600-M444-M33-M1111
- Resin used for multi-purpose use. It belongs to (GP) category, an abbreviation for the word (general purpose). we offer two products: GP200-GP400

- Resin used for the production of pipes. It belongs the (PP) category, an abbreviation for the word (Pipe). We offer three products: PP300-PP500-PP700

Recommended Storage Instructions for Unsaturated Resin Products :

Store at a temperature below 25 ° C and avoid direct sunlight, heat, or flame.

Keep the products in containers in order to avoid moisture and loss of Monomer.

Shelf life is 6 months if kept below 25 ° C.

Warning: resin contains ingredients that could be harmful if misused.

Contact with skin and eyes should be avoided, protective equipment and clothing should be worn while being used.



Products Specification List

PRODUCT	DESCRIPTION	APPLICATIONS
M600-MM	Polyester resin of medium reaction with a mixture of standardized glycols treated with acrylic. The resin shows excellent mechanical strength and excellent resistance to water and heat.	Specially manufactured for high-quality artificial marble surfaces (cast).
M600-PMM	Polyester resin of medium reaction with a mixture of standardized glycols treated with acrylic and enhanced with cobalt. The resin shows excellent mechanical strength and excellent resistance to water and heat.	Specially manufactured for high-quality artificial marble surfaces (spray + cast).
M444-PA	Polyester resin of medium reaction with a mixture of standardized glycols and enhanced with cobalt. The resin shows excellent mechanical strength and excellent resistance to water and heat and good mechanical properties.	Specially manufactured for artificial marble surfaces (spray + cast).
M444-PMM	Polyester resin of medium reaction with a mixture of standardized glycols treated with acrylic and enhanced with cobalt. The resin shows excellent mechanical strength and excellent resistance to water and heat.	Specially manufactured for high-quality artificial marble surfaces (spray + cast).
M111-PA	Polyester resin of medium reaction with a mixture of standardized glycols and enhanced with cobalt. The resin shows excellent mechanical strength and excellent resistance to water and heat and good cracking resistance.	Manufactured for medium-quality artificial marble for all purposes. Whether spraying or casting.
GP-200	Low-viscosity and high-quality resins, aqueous phthalic acid with a mixture of special glycols, the resin shows excellent mechanical strength and superior resistance to water and heat.	Manufactured for medium-quality artificial marble for all purposes. Whether spraying or casting.
GEL COAT	Gelcoat resin is a multi-purpose resin manufactured from aqueous phthalic acid with a mixture of glycols mixed with styrene. It shows good mechanical properties, excellent water and heat resistance, excellent gloss, elegant anti-yellowing glow, and resistance to chemicals and salts	Water tanks, furniture, boats, sanitary products, wall panels, food containers, general purpose uses. Mobile toilets.



Pigment

We at (BCMI) have created a specialized department for the production of (polyester pigment paste) which is a high viscosity liquid used to add pigment to artificial marble and polyester Gelcoat by adding it in small proportions as needed.

Pigments are used in fiberglass composites as well as marine aerosol applications, it is also used in:

- General use molding, residential building and construction molding and casting, auto parts, poles, and masts.
- Convoys and residential vehicles, boats and marine industries, roofs, household appliances, truck and bus components.
- Sidewalks, drainage systems, sports equipment.





Pigments Colors

- SUPER WHITE CODE No WH0002
- WHITE CODE No WH0001
- GODEN YELLOW CODE No YE0007
- CLASSIC BROWN CODE No BR0006
- HEAVY CREAM CO No CR0009
- RICH BLACK CODE No BLA0012





Granite Powder

Technical specifications: It is a mixture of alumina tri-hydrate powder with granite granules of multicolored and sizes, made of artificial marble, which is made of thermoset Unsaturated Polyester Resin. This product can be sanded easily and smoothly.

Technical Specifications :

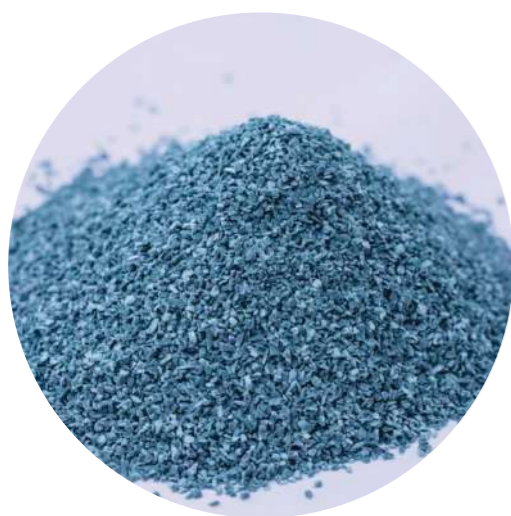
- Odorless
- Insoluble in water
- inflammable
- Density is about (1.6-1.9) gr/cm³

Colors:

We have a wide range of colors to suit all tastes and we have a catalog for granite powder colors .

Packing:

Carton or bag of 25 kg weight





Third Product

Electrical Products

Our company offers a comprehensive range of low voltage systems, solutions and equipment, which is used in a wide range of residential, industrial, commercial applications and energy facilities, as we use the latest technologies that ensure protection, high reliability and low voltage distribution systems and equipment. We also provide a wide range of sizes that suit our clients' requirements.



Scope of working:

As a flexible and Constantly Evolving Company, BCMI prides itself on offering complete solutions for its customers with innovative design and professionally finished installations. Our experienced, highly qualified team of electrical engineers offer the following services:

Power Quality Management & Energy Saving Solutions:

- Photovoltaic Panel Study.
- Power Factor Study.
- Harmonic study.
- Energy consumption study.
- Phase voltage & current unbalance.
- Neutral voltage & current monitoring.
- Software and applications.

Panel Builder:

- Power Factor Correction Panels.
- Automatic Transfer Switch Panels (ATS).
- Synchronization Panels.
- L.V. Switchboards & Main Distribution Panels.
- Motor Control Center (MCC control).
- Control, PLC's & HMI Panels.

Industrial Control Systems:

- Motor Drive.
- Specialized controllers.
- Weighing solutions.
- Sensors and instruments.

Testing & Commissioning for our products Installation & termina



Products Categories: First: Electrical Panels Manufacturing

Low voltage distribution panels of all kinds

(main/sub): Low voltage electrical distribution panels are designed and manufactured to be used for distribution, protection and control of electric power purposes. they are classified according to their location on the electrical network to:

- **Main Distribution Panels:** They are generally installed after the electrical power source, directly after the main electrical power source such as transformers and generators, and they are available with currents up to 6300 amperes.
- **Sub Distribution Panels:** These panels distribute the incoming energy to various sub feeders and are available with currents up to 630 amps.
- Final distribution panels and they are generally installed directly before electrical loads to maintain the required protection for all electrical circuits and devices, and are available with currents up to 250 amperes.



Available with electrical insulation voltage up to 1000 volts.



Designed to operate at a temperature of 50° C.



Available as a floor stand.



Available for indoor or outdoor applications with a protection grade of IP55.



Gray 7035 RAL color or as per customer specifications.



Manufacturing as per customer specifications.



Maximum reliability and safety.











Ample internal space for connecting cables



Automatic Switch Panels

The automatic switchboards carry out the process of transferring the loads from the main source (the electricity network) to the secondary source (the generator) when the power is cut off or any disturbance occurs in the main electricity network, in order to maintain the continuity of supplying the consumer with the necessary electrical energy.

-  Available in currents up to 6300 amp.
-  Available with electrical insulation voltage up to 1000 volts.
-  Equipped to work and connect with the BMS Building Management System for monitoring and control.
-  Designed to operate at a temperature of 50° C.
-  Available as a floor stand.
-  Available for indoor or outdoor applications with a protection grade of IP55.
-  Gray 7035 RAL color or as per customer specifications.
-  Manufacturing as per customer specifications.
-  Maximum reliability and safety.
-  Ample internal space for connecting cables.



Electrical Synchronization Panels:

These panels are specially designed to meet the requirements of power systems, and are used to control the connection of a group of parallel generators, after matching the speed, frequency and voltage of the generators with the operating network and can be manually controlled or set to operate automatically. It is used mainly in Large facilities and industrial and commercial applications that require a large amount of electrical energy from several generators running simultaneously to share the electrical load between them, as the synchronization panels control the process of outputting and entering the generators into the network according to the electrical load to work simultaneously with the rest of the other generators or the operating network.



Available in currents up to 6300 amp.



Available with electrical insulation voltage up to 1000 volts.



Equipped to work and connect with the BMS Building Management System for monitoring and control.



Designed to operate at a temperature of 50° C.



Available as a floor stand.



Available for indoor or outdoor applications with a protection grade of IP55.



Gray 7035 RAL color or as per customer specifications.



Manufacturing as per customer specifications.



Maximum reliability and safety.

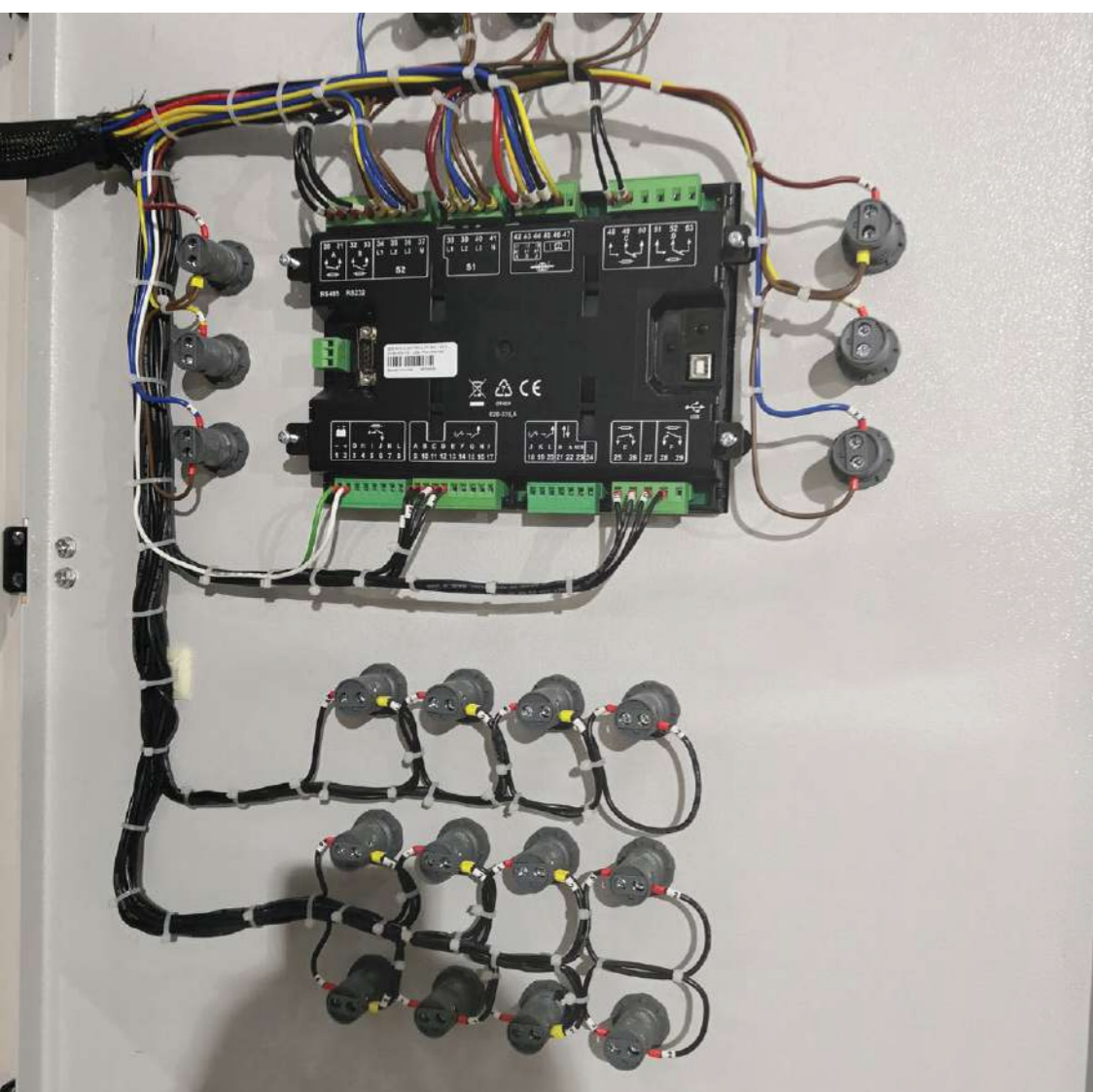
Second: Electrical Installations

We provide electrical installations, cable extensions and cable carrier installations, using the latest equipment and methods according to industry standards.

Third: Electrical Maintenance Services:

BCMI provides maintenance contracts for power stations (electrical transformers - low-pressure panels - generators), and adheres to the highest standards of quality, safety, and performance, as we believe that the company's success depends primarily on gaining the customer's confidence in the quality of the products and the services provided. We also continuously focus on improving the quality of our products and services throughout all stages of the production process, applying strict examination and testing of products, and reviewing quality systems through certified external inspectors.







Contact Information & Bank Accounts:

Headquarters:

Kingdom of Saudi Arabia - Jeddah - Al
Hijrah Highway (Asfan)
P.O.Box: 126444
Postal code: 21352
Phone: 0122900604
Fax: 0122882920
Unified number: 920002964

Sales - Projects:

Western and southern region:0562471116
Central and eastern region:0545684901
0544782408

Sales - Wholesales:

Riyadh: 0544306064
Khamis Mushait : 0557434695
The rest of the SA Kingdom: 0544104104

International Branches & Agents:

United Arab Emirates - Dubai: 00971561200032
Hashemite Kingdom of Jordan - Amman: 00962785526213
Kingdom of Bahrain - Manama: 0096896449499
Sultanate of Oman - Muscat: 0096896449499

Bank accounts:

Al-Ahli Bank : 13477777000101
Al-Rajhi Bank : 223608010115054



Contact Information & Bank Accounts:

Customers Service:

In case there is any after installation inquiry regarding any of our products feel free to contact our customer service team, our maintenance team is always ready to assist you as soon as possible. Do not hesitate to contact us, we are at your service.

Tel : 92000 2964

Ext No: 222

Mobile: 0500592643

website: www.albadaha.com

E-mail: info@albadaha.com

customers service: customer.service@albadaha.com

Social Media Account:

  [bcmi_official](#)

 [albadaha](#)



BCMI

شركة البداهة للصناعات الحديثة المحدودة
Al-Badaha Company For Modern Industries

Al-Badaha Company for Modern Industries (BCMI)

Company Profile

